

West Cliff Hotel, Bournemouth

Bedroom Proposals

CORRIE JONES
ARCHITECTURE



Concept

Sun, Fun, Smart & Silly. This is our approach to this project. In the heart of a town known for sandy beaches and sunny holidays away, Bournemouth has a very rich and varied history. From an area of mostly barren heathland, to a place to convalesce, it has held a place for all sorts over the years. It has vied for status amongst the other towns along the south coast with many grand buildings from the Victorian and Deco eras and was a favourite of many literary figures...and the Fab Four. It is now a place to let one's hair down...have fun, and be silly. This sense of warmth and happiness, the bright colours, tempered with a sense of seriousness are elements we hope to weave into the design of this lovely hotel.



SUN



SMART



FUN

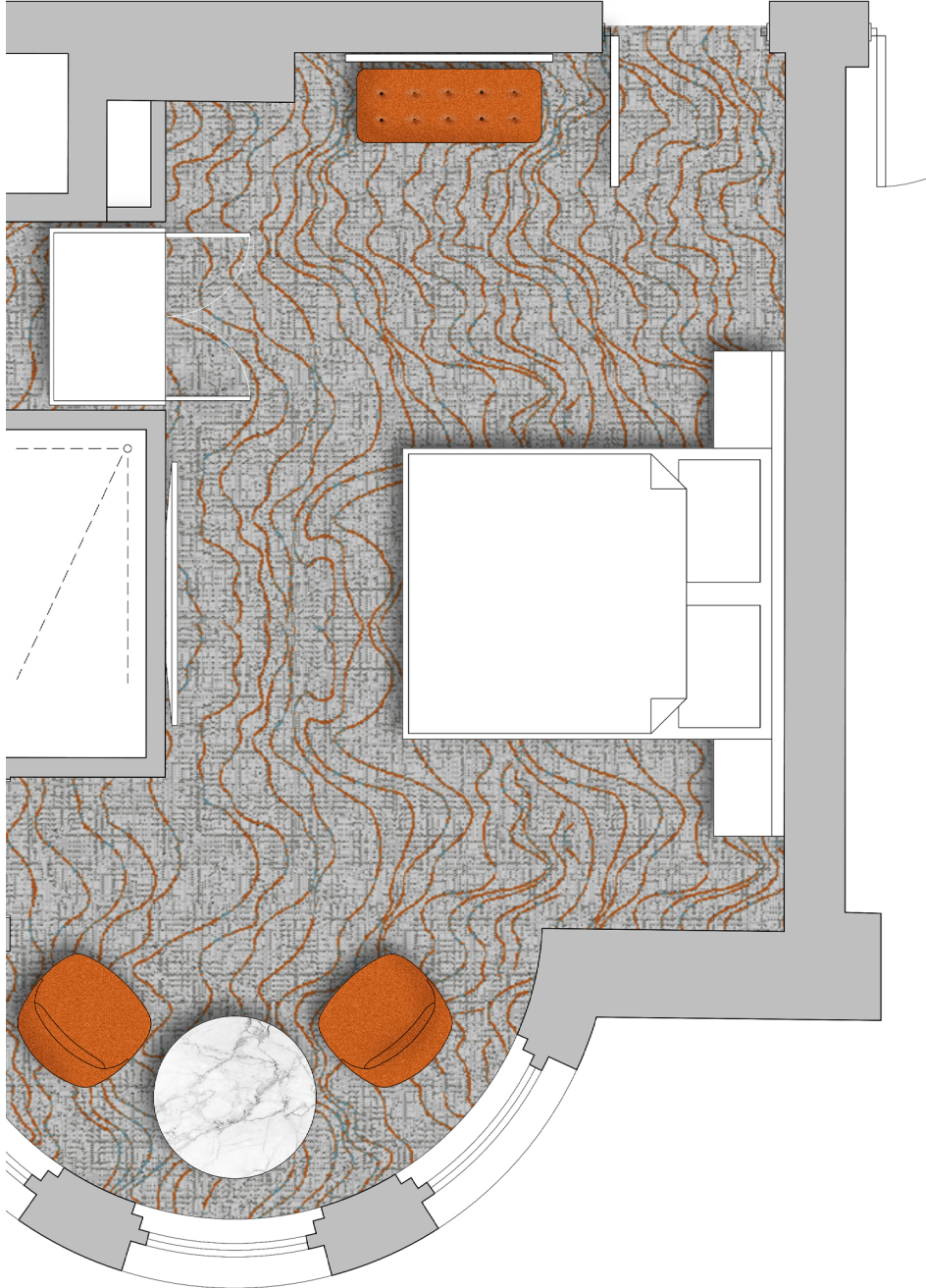
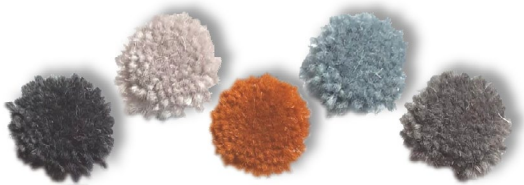


SILLY



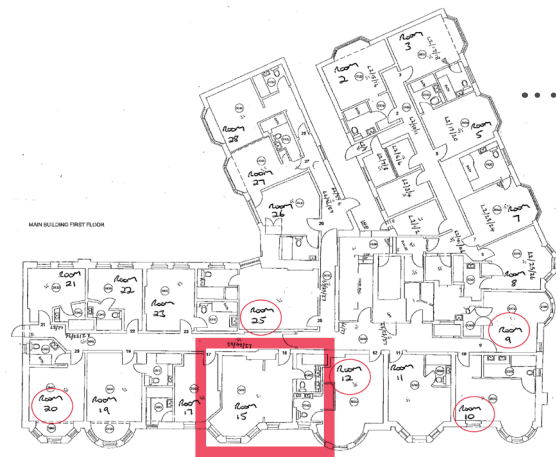
Rippled Sand

We have revised the bedroom carpet to one that is more whimsical and a bit less formal than that currently in the mock-up rooms. Our new proposal evokes the image of rippled sand on the beach early in the morning. This unstructured, playful carpet will be made of 4-5 different coloured tufted wools, all within the palette of our overall concept, warm... with hints of rich burnt orange. It will have plenty of life allowing it to obscure conical wear, yet still be contemporary and sophisticated.



Room 15

We have now developed the concept to both headboard side, and reverse side..illustrated here in Rm 15.
Opposite the bed we are creating a zone that can house desk, wardrobe and shelving/storage for a coffee/tea-point, clothing, linen, mini-bar or safe.



'Sculpture'
axminster carpet
by Wilton Carpets

Constanza
Tobacco Buttoned
Storage Bench

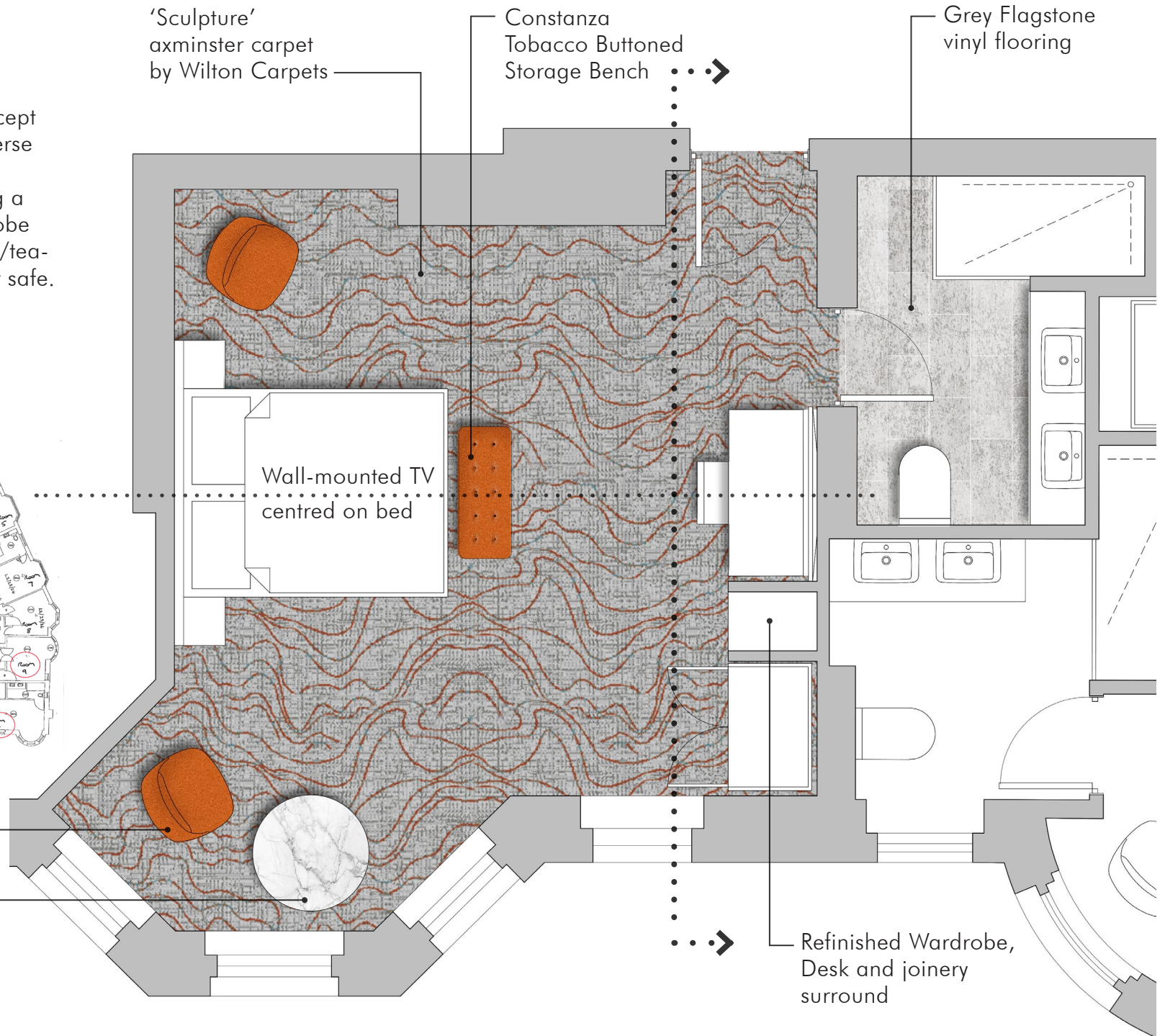
Grey Flagstone
vinyl flooring

Wall-mounted TV
centred on bed

Aurelie Tub Chair in
Burnt Orange Velvet

Marble-topped
small coffee table

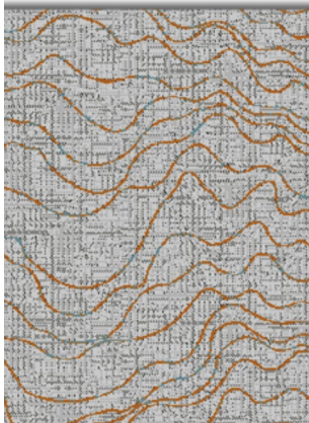
Refinished Wardrobe,
Desk and joinery
surround



Bedrooms - Warm

The bedrooms will be a sophisticated blend of muted earth tones in the carpet and hard furnishings; headboards and wardrobes...with splashes of warm colours in the artwork and soft furnishings...sand, dusk, burnt orange...evoking the essence of sunset along the Dorset coast.

- Artwork - Large framed seaside prints by Jack Vetriano
- Aurelie Tub Chair in Burnt Orange Velvet
- Constanza Tobacco Buttoned Storage Bench
- 'Sculpture' axminster by Wilton Carpets
- Astro Olan bronze wall light
- 'Walter' table light by Atkin and Thyme
- Marble-topped side table - Source TBC



Headboard Side 'Muted Stone'

Our preferred palette for the bedrooms includes changing the wall colour to a soft warm stone colour, creating a warm and elegant mood.

'Muted Stone' by Dulux, or Elephant's Breath by Farrow and Ball are very beautiful colours that instantly bring the sophistication level up a few notches.



Opposite Side 'Muted Stone'

Many rooms will have a stretch of internal wall where we can place the existing wardrobe and desk and possibly a location for a tea-point. We are making this area a purpose-built and designed zone' with smart yet inexpensive joinery of softwood, painted in the same colour of the room. With simple shelving and a recess for our wardrobe, this item along with re-finished loose furniture will smarten up the room and create a more cohesive space.



Bedrooms - Stormy

Depending on the availability of particular products or artwork...or indeed to differentiate certain areas of the hotel, alternative colourways can be used. Here we illustrate how a subtle change in accent colour can totally transform the mood of the space. Because of course it is not always sunny on the south coast.



- Artwork - Large framed seaside prints by Jack Vetriano
- Aurelie Tub Chair in Emerald Green Velvet
- Safina Ottoman Storage Bench in Bottle Green Velvet
- 'Graphite' Twill carpets by Newhey Carpets
- Marble-topped side table - Source TBC



Furniture Re-finishing



The current condition of much of the bedroom furniture is servicable, but the finish is dated and not very attractive. Our solution is to re-finish these items; wardrobes, desks, end tables etc. in adhesive film which very realistically mimics a light grey natural timber with a bit of life, in keeping with our relaxed informal aesthetic. The Cover Styl' product is exceptionally realistic, has the touch and feel of timber and is hard-wearing, easily cleaned and a very cost-effective way to enhance and transform dated furniture.



Bathrooms

The bathrooms will be a similarly muted palette, but in a lighter tone. We are generally keeping to the principle of the mock-up rooms, with a few minor amendments. The shower, screen, toilet, basins, and primary wall treatment will be the same. We have selected a more elegant mixer tap, and are proposing a smaller-format accent tiling, which is more contemporary and sophisticated. Additionally, while cost-effective vinyl is appropriate, faux-timber vinyl has no place in a bathroom, so we are proposing a stone-effect vinyl instead.



- Ionic shower screen
- Gala Blanco wall tiles
- Grey Flagstone vinyl flooring
- Duro basin on Corian shelf
- Raku Blue accent wall tiles
- Logis 70 mixer tap by Hansgrohe

CORRIE JONES
ARCHITECTURE

CREATING BEAUTIFUL BUILDINGS

21 Cantley Gardens
London SE19 2SD
07584.965.470

www.corriejonesarchitecture.com

